

Acta Crystallographica Section E

## Structure Reports

Online

ISSN 1600-5368

***N'*-(2-Hydroxy-3-methoxybenzylidene)-1,3-benzodioxole-5-carbohydrazide monohydrate**

Chun-Lin Du

College of Chemical Engineering &amp; Materials Science, Liaodong University, Dandong 118003, People's Republic of China

Correspondence e-mail: chunlin\_du@163.com

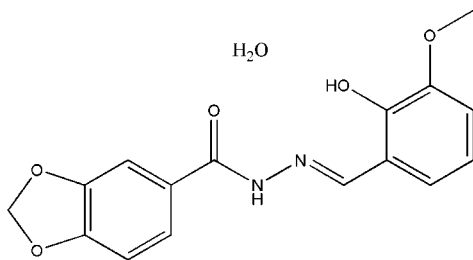
Received 24 November 2008; accepted 28 November 2008

Key indicators: single-crystal X-ray study;  $T = 298$  K; mean  $\sigma(\text{C}-\text{C}) = 0.003$  Å;  $R$  factor = 0.032;  $wR$  factor = 0.076; data-to-parameter ratio = 8.4.

Single crystals of the title compound,  $\text{C}_{16}\text{H}_{14}\text{N}_2\text{O}_5 \cdot \text{H}_2\text{O}$ , were obtained from a condensation reaction of 1,3-benzodioxole-5-carbohydrazide and 3-methoxysalicylaldehyde in a 95% ethanol solution. The asymmetric unit consists of a Schiff base molecule, which assumes an *E* configuration with respect to the  $\text{C}=\text{N}$  bond, and a water molecule of crystallization. The dihedral angle between the two substituted benzene rings is  $12.7(2)^\circ$ . In the crystal structure, molecules are linked through intermolecular  $\text{N}-\text{H} \cdots \text{O}$  and  $\text{O}-\text{H} \cdots \text{O}$  hydrogen bonds, forming layers parallel to the *bc* plane.

## Related literature

For the biological properties of hydrazones, see: Bedia *et al.* (2006); Rollas *et al.* (2002); Okabe *et al.* (1993). For bond-length data, see: Allen *et al.* (1987). For related structures, see: Fun *et al.* (2008); Qu *et al.* (2008); Shan *et al.* (2008); Yehye *et al.* (2008).



## Experimental

## Crystal data

 $\text{C}_{16}\text{H}_{14}\text{N}_2\text{O}_5 \cdot \text{H}_2\text{O}$   
 $M_r = 332.31$ 

 Orthorhombic,  $P2_12_12_1$   
 $a = 4.792(2)$  Å

 $b = 12.916(3)$  Å  
 $c = 24.002(6)$  Å  
 $V = 1485.6(7)$  Å<sup>3</sup>  
 $Z = 4$ 

 Mo  $K\alpha$  radiation  
 $\mu = 0.12$  mm<sup>-1</sup>  
 $T = 298(2)$  K  
 $0.23 \times 0.20 \times 0.20$  mm

## Data collection

 Bruker SMART 1K CCD area-detector diffractometer  
 Absorption correction: multi-scan (SADABS; Sheldrick, 1996)  
 $T_{\min} = 0.974$ ,  $T_{\max} = 0.977$ 

 8595 measured reflections  
 1907 independent reflections  
 1639 reflections with  $I > 2\sigma(I)$   
 $R_{\text{int}} = 0.030$ 

## Refinement

 $R[F^2 > 2\sigma(F^2)] = 0.032$   
 $wR(F^2) = 0.076$   
 $S = 1.05$   
 1907 reflections  
 228 parameters  
 4 restraints

 H atoms treated by a mixture of independent and constrained refinement  
 $\Delta\rho_{\text{max}} = 0.13$  e Å<sup>-3</sup>  
 $\Delta\rho_{\text{min}} = -0.13$  e Å<sup>-3</sup>

Table 1

Hydrogen-bond geometry (Å, °).

| $D-\text{H} \cdots A$                        | $D-\text{H}$ | $\text{H} \cdots A$ | $D \cdots A$ | $D-\text{H} \cdots A$ |
|--|--------------|---------------------|--------------|-----------------------|
| $\text{O1}-\text{H1} \cdots \text{N1}$       | 0.82         | 2.04                | 2.743 (2)    | 143                   |
| $\text{O1}-\text{H1} \cdots \text{O6}^i$     | 0.82         | 2.56                | 3.001 (2)    | 115                   |
| $\text{N2}-\text{H2} \cdots \text{O6}^i$     | 0.899 (10)   | 2.075 (11)          | 2.962 (2)    | 168 (3)               |
| $\text{O6}-\text{H6A} \cdots \text{O2}$      | 0.857 (10)   | 1.880 (12)          | 2.728 (2)    | 170 (3)               |
| $\text{O6}-\text{H6B} \cdots \text{O1}^{ii}$ | 0.848 (10)   | 2.269 (16)          | 3.043 (2)    | 152 (2)               |
| $\text{O6}-\text{H6B} \cdots \text{O3}^{ii}$ | 0.848 (10)   | 2.538 (19)          | 3.226 (2)    | 139 (2)               |

Symmetry codes: (i)  $-x + 1, y + \frac{1}{2}, -z + \frac{3}{2}$ ; (ii)  $x - 1, y, z$ .

Data collection: SMART (Bruker, 2002); cell refinement: SAINT (Bruker, 2002); data reduction: SAINT; program(s) used to solve structure: SHELXS97 (Sheldrick, 2008); program(s) used to refine structure: SHELXL97 (Sheldrick, 2008); molecular graphics: SHELXTL (Sheldrick, 2008); software used to prepare material for publication: SHELXTL.

The author acknowledges Liaodong University for research funding.

Supplementary data and figures for this paper are available from the IUCr electronic archives (Reference: SJ2559).

## References

- Allen, F. H., Kennard, O., Watson, D. G., Brammer, L., Orpen, A. G. & Taylor, R. (1987). *J. Chem. Soc. Perkin Trans. 2*, pp. S1–19.
- Bedia, K.-K., Elcin, O., Seda, U., Fatma, K., Nathaly, S., Sevim, R. & Dimoglo, A. (2006). *Eur. J. Med. Chem.* **41**, 1253–1261.
- Bruker (2002). SAINT and SMART. Bruker AXS Inc., Madison, Wisconsin, USA.
- Fun, H.-K., Sujith, K. V., Patil, P. S., Kalluraya, B. & Chantrapromma, S. (2008). *Acta Cryst.* **E64**, o1961–o1962.
- Okabe, N., Nakamura, T. & Fukuda, H. (1993). *Acta Cryst.* **C49**, 1678–1680.
- Qu, L.-Z., Yang, T., Cao, G.-B. & Wang, X.-Y. (2008). *Acta Cryst.* **E64**, o2061.
- Rollas, S., Gülerman, N. & Erdeniz, H. (2002). *Farmaco*, **57**, 171–174.
- Shan, S., Tian, Y.-L., Wang, S.-H., Wang, W.-L. & Xu, Y.-L. (2008). *Acta Cryst.* **E64**, o1363.
- Sheldrick, G. M. (1996). SADABS. University of Göttingen, Germany.
- Sheldrick, G. M. (2008). *Acta Cryst.* **A64**, 112–122.
- Yehye, W. A., Ariffin, A. & Ng, S. W. (2008). *Acta Cryst.* **E64**, o960.

**supplementary materials**

*Acta Cryst.* (2009). E65, o29 [ doi:10.1107/S1600536808040117 ]

## *N'*-(2-Hydroxy-3-methoxybenzylidene)-1,3-benzodioxole-5-carbohydrazide monohydrate

C.-L. Du

### Comment

Hydrazone compounds, derived from the condensation reactions of aldehydes with hydrazides, show interesting biological properties (Okabe *et al.*, 1993; Bedia *et al.*, 2006; Rollas *et al.*, 2002). Recently, a large number of hydrazone derivatives have been reported (Shan *et al.*, 2008; Fun *et al.*, 2008; Qu *et al.*, 2008; Yehye *et al.*, 2008). We report here the structure of a new hydrazone compound, I, Fig. 1, with a Schiff base molecule, which assumes an *E* configuration with respect to the C=N bond and a water molecule in the asymmetric unit. The dihedral angle between the two substituted benzene rings is 12.7 (2)°. All the bond lengths are within normal ranges (Allen *et al.*, 1987).

In the crystal structure, molecules are linked through intermolecular N—H···O and O—H···O hydrogen bonds (Table 1), forming layers parallel to the *bc* direction (Fig. 2).

### Experimental

The title compound was prepared by Schiff base condensation reaction of 1,3-benzodioxole-5-carbohydrazide (1.0 mmol) and 3-methoxysalicylaldehyde (1.0 mmol) in a 95% ethanol solution (50 ml). Needle colorless crystals were formed by gradual evaporation of the solution in air for a few days.

### Refinement

The imino H atom was located in a difference map and refined with a N—H distance restraint of 0.90 (1) Å. The water H atoms were also located in a difference map and refined with O—H and H···H distances restraints of 0.85 (1) and 1.37 (2) Å, respectively. The other H atoms were positioned geometrically [C—H = 0.93–0.97 Å] and refined using a riding model, with  $U_{\text{iso}}(\text{H}) = 1.2U_{\text{eq}}(\text{C})$  and  $1.5U_{\text{eq}}(\text{C}_{\text{methyl}})$ . A rotating group model was used for the methyl group. In the absence of significant anomalous scattering effects, 1034 Friedel pairs were merged.

### Figures

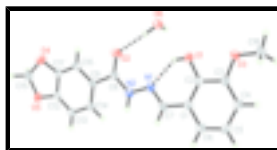


Fig. 1. The structure of the title compound, showing 30% probability displacement ellipsoids and the atom-numbering scheme.

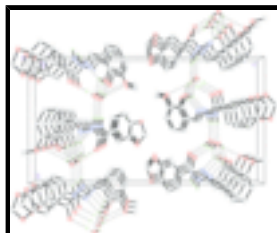


Fig. 2. The crystal packing of the title compound, viewed down the *a* axis.

## *N*'-(2-Hydroxy-3-methoxybenzylidene)-1,3-benzodioxole-5-carbohydrazide monohydrate

### Crystal data

C<sub>16</sub>H<sub>14</sub>N<sub>2</sub>O<sub>5</sub>·H<sub>2</sub>O

*M*<sub>r</sub> = 332.31

Orthorhombic, *P*2<sub>1</sub>2<sub>1</sub>2<sub>1</sub>

Hall symbol: P 2ac 2ab

*a* = 4.792 (2) Å

*b* = 12.916 (3) Å

*c* = 24.002 (6) Å

*V* = 1485.6 (7) Å<sup>3</sup>

*Z* = 4

*F*<sub>000</sub> = 696

*D*<sub>x</sub> = 1.486 Mg m<sup>-3</sup>

Mo *K*α radiation

λ = 0.71073 Å

Cell parameters from 3222 reflections

θ = 2.4–25.6°

μ = 0.12 mm<sup>-1</sup>

*T* = 298 (2) K

Cut from needle, colorless

0.23 × 0.20 × 0.20 mm

### Data collection

Bruker SMART 1K CCD area-detector diffractometer

Radiation source: fine-focus sealed tube

Monochromator: graphite

*T* = 298(2) K

ω scans

Absorption correction: multi-scan (SADABS; Sheldrick, 1996)

*T*<sub>min</sub> = 0.974, *T*<sub>max</sub> = 0.977

8595 measured reflections

1907 independent reflections

1639 reflections with *I* > 2σ(*I*)

*R*<sub>int</sub> = 0.030

θ<sub>max</sub> = 27.0°

θ<sub>min</sub> = 1.7°

*h* = -6→6

*k* = -16→13

*l* = -30→28

### Refinement

Refinement on *F*<sup>2</sup>

Least-squares matrix: full

*R* [*F*<sup>2</sup> > 2σ(*F*<sup>2</sup>)] = 0.032

*wR* (*F*<sup>2</sup>) = 0.076

*S* = 1.05

1907 reflections

228 parameters

4 restraints

Primary atom site location: structure-invariant direct methods

Secondary atom site location: difference Fourier map

Hydrogen site location: inferred from neighbouring sites

H atoms treated by a mixture of independent and constrained refinement

$$w = 1/[\sigma^2(F_o^2) + (0.0385P)^2 + 0.1335P]$$

where *P* = (*F*<sub>o</sub><sup>2</sup> + 2*F*<sub>c</sub><sup>2</sup>)/3

(Δ/σ)<sub>max</sub> < 0.001

Δρ<sub>max</sub> = 0.13 e Å<sup>-3</sup>

Δρ<sub>min</sub> = -0.13 e Å<sup>-3</sup>

Extinction correction: none

*Special details*

**Geometry.** All e.s.d.'s (except the e.s.d. in the dihedral angle between two l.s. planes) are estimated using the full covariance matrix. The cell e.s.d.'s are taken into account individually in the estimation of e.s.d.'s in distances, angles and torsion angles; correlations between e.s.d.'s in cell parameters are only used when they are defined by crystal symmetry. An approximate (isotropic) treatment of cell e.s.d.'s is used for estimating e.s.d.'s involving l.s. planes.

**Refinement.** Refinement of  $F^2$  against ALL reflections. The weighted  $R$ -factor  $wR$  and goodness of fit  $S$  are based on  $F^2$ , conventional  $R$ -factors  $R$  are based on  $F$ , with  $F$  set to zero for negative  $F^2$ . The threshold expression of  $F^2 > \sigma(F^2)$  is used only for calculating  $R$ -factors(gt) *etc.* and is not relevant to the choice of reflections for refinement.  $R$ -factors based on  $F^2$  are statistically about twice as large as those based on  $F$ , and  $R$ -factors based on ALL data will be even larger.

*Fractional atomic coordinates and isotropic or equivalent isotropic displacement parameters ( $\text{\AA}^2$ )*

|      | <i>x</i>    | <i>y</i>     | <i>z</i>    | $U_{\text{iso}}^*/U_{\text{eq}}$ |
|------|-------------|--------------|-------------|----------------------------------|
| O1   | 0.9802 (3)  | 0.80320 (10) | 0.83305 (6) | 0.0447 (4)                       |
| H1   | 0.8775      | 0.8121       | 0.8061      | 0.067*                           |
| O2   | 0.3794 (4)  | 0.78499 (11) | 0.69933 (6) | 0.0563 (5)                       |
| O3   | 1.3470 (3)  | 0.79317 (11) | 0.91162 (6) | 0.0489 (4)                       |
| O4   | -0.3191 (4) | 0.81446 (12) | 0.53841 (6) | 0.0599 (5)                       |
| O5   | -0.3991 (3) | 0.98897 (11) | 0.52200 (6) | 0.0490 (4)                       |
| O6   | 0.4857 (4)  | 0.67908 (12) | 0.79533 (6) | 0.0528 (4)                       |
| N1   | 0.7019 (4)  | 0.92306 (13) | 0.75678 (6) | 0.0368 (4)                       |
| N2   | 0.5153 (4)  | 0.95059 (13) | 0.71517 (7) | 0.0374 (4)                       |
| C1   | 1.0510 (4)  | 0.98797 (15) | 0.82015 (7) | 0.0349 (4)                       |
| C2   | 1.1069 (4)  | 0.89400 (14) | 0.84647 (8) | 0.0330 (4)                       |
| C3   | 1.3082 (4)  | 0.88967 (15) | 0.88912 (8) | 0.0360 (4)                       |
| C4   | 1.4481 (5)  | 0.97831 (16) | 0.90522 (8) | 0.0415 (5)                       |
| H4   | 1.5789      | 0.9754       | 0.9338      | 0.050*                           |
| C5   | 1.3937 (5)  | 1.07197 (16) | 0.87871 (8) | 0.0449 (5)                       |
| H5   | 1.4897      | 1.1314       | 0.8893      | 0.054*                           |
| C6   | 1.1978 (5)  | 1.07680 (15) | 0.83680 (8) | 0.0418 (5)                       |
| H6   | 1.1624      | 1.1397       | 0.8193      | 0.050*                           |
| C7   | 0.8453 (5)  | 0.99888 (16) | 0.77596 (8) | 0.0388 (5)                       |
| H7   | 0.8163      | 1.0643       | 0.7608      | 0.047*                           |
| C8   | 0.3608 (5)  | 0.87806 (15) | 0.68878 (7) | 0.0371 (5)                       |
| C9   | 0.1638 (5)  | 0.91647 (14) | 0.64528 (7) | 0.0330 (4)                       |
| C10  | 0.0244 (5)  | 0.84061 (15) | 0.61392 (8) | 0.0383 (5)                       |
| H10  | 0.0559      | 0.7705       | 0.6200      | 0.046*                           |
| C11  | -0.1597 (5) | 0.87353 (15) | 0.57404 (8) | 0.0385 (5)                       |
| C12  | -0.2088 (5) | 0.97742 (15) | 0.56457 (7) | 0.0359 (4)                       |
| C13  | -0.0799 (5) | 1.05292 (15) | 0.59480 (8) | 0.0412 (5)                       |
| H13  | -0.1162     | 1.1227       | 0.5885      | 0.049*                           |
| C14  | 0.1088 (5)  | 1.02087 (15) | 0.63555 (8) | 0.0386 (5)                       |
| H14  | 0.2004      | 1.0705       | 0.6568      | 0.046*                           |
| C15  | -0.4686 (6) | 0.88603 (18) | 0.50433 (8) | 0.0497 (6)                       |
| H15A | -0.6678     | 0.8746       | 0.5080      | 0.060*                           |
| H15B | -0.4179     | 0.8765       | 0.4655      | 0.060*                           |

## supplementary materials

---

|      |            |              |             |            |
|------|------------|--------------|-------------|------------|
| C16  | 1.5697 (5) | 0.78022 (19) | 0.95022 (9) | 0.0522 (6) |
| H16A | 1.5365     | 0.8226       | 0.9824      | 0.078*     |
| H16B | 1.7421     | 0.8005       | 0.9330      | 0.078*     |
| H16C | 1.5806     | 0.7089       | 0.9613      | 0.078*     |
| H2   | 0.499 (7)  | 1.0186 (9)   | 0.7078 (10) | 0.080*     |
| H6A  | 0.474 (6)  | 0.7133 (18)  | 0.7649 (6)  | 0.080*     |
| H6B  | 0.366 (5)  | 0.706 (2)    | 0.8170 (8)  | 0.080*     |

### Atomic displacement parameters ( $\text{\AA}^2$ )

|     | $U^{11}$    | $U^{22}$    | $U^{33}$    | $U^{12}$     | $U^{13}$     | $U^{23}$    |
|-----|-------------|-------------|-------------|--------------|--------------|-------------|
| O1  | 0.0460 (9)  | 0.0381 (8)  | 0.0500 (9)  | -0.0062 (7)  | -0.0165 (7)  | -0.0011 (7) |
| O2  | 0.0772 (12) | 0.0351 (8)  | 0.0567 (9)  | 0.0061 (9)   | -0.0217 (9)  | 0.0055 (7)  |
| O3  | 0.0506 (10) | 0.0414 (8)  | 0.0548 (8)  | -0.0064 (8)  | -0.0222 (8)  | 0.0105 (7)  |
| O4  | 0.0706 (12) | 0.0453 (8)  | 0.0638 (10) | 0.0007 (9)   | -0.0276 (10) | -0.0127 (8) |
| O5  | 0.0524 (10) | 0.0516 (9)  | 0.0430 (8)  | 0.0055 (8)   | -0.0141 (8)  | -0.0009 (7) |
| O6  | 0.0684 (12) | 0.0394 (8)  | 0.0505 (9)  | 0.0050 (9)   | -0.0110 (9)  | 0.0016 (7)  |
| N1  | 0.0366 (9)  | 0.0429 (9)  | 0.0308 (8)  | 0.0065 (8)   | -0.0034 (8)  | 0.0020 (7)  |
| N2  | 0.0394 (10) | 0.0373 (9)  | 0.0356 (8)  | 0.0034 (8)   | -0.0070 (8)  | 0.0044 (7)  |
| C1  | 0.0326 (11) | 0.0389 (10) | 0.0333 (9)  | 0.0042 (9)   | 0.0022 (8)   | -0.0020 (8) |
| C2  | 0.0319 (10) | 0.0339 (9)  | 0.0332 (9)  | -0.0007 (9)  | -0.0005 (8)  | -0.0039 (8) |
| C3  | 0.0357 (11) | 0.0380 (10) | 0.0344 (9)  | -0.0002 (10) | -0.0025 (9)  | 0.0003 (8)  |
| C4  | 0.0389 (12) | 0.0462 (11) | 0.0393 (10) | -0.0042 (10) | -0.0058 (10) | -0.0047 (9) |
| C5  | 0.0442 (13) | 0.0380 (11) | 0.0525 (12) | -0.0065 (10) | -0.0029 (11) | -0.0063 (9) |
| C6  | 0.0450 (13) | 0.0335 (10) | 0.0469 (11) | 0.0031 (10)  | 0.0012 (11)  | 0.0001 (9)  |
| C7  | 0.0418 (12) | 0.0381 (10) | 0.0365 (10) | 0.0068 (11)  | -0.0019 (9)  | 0.0038 (8)  |
| C8  | 0.0424 (12) | 0.0366 (10) | 0.0323 (10) | 0.0055 (10)  | 0.0005 (9)   | 0.0019 (8)  |
| C9  | 0.0356 (11) | 0.0333 (9)  | 0.0302 (9)  | 0.0016 (9)   | 0.0021 (8)   | 0.0020 (7)  |
| C10 | 0.0446 (12) | 0.0325 (10) | 0.0377 (10) | 0.0031 (10)  | -0.0014 (10) | 0.0007 (8)  |
| C11 | 0.0419 (13) | 0.0376 (10) | 0.0360 (10) | -0.0013 (10) | -0.0009 (9)  | -0.0064 (8) |
| C12 | 0.0357 (11) | 0.0438 (11) | 0.0283 (9)  | 0.0039 (9)   | 0.0002 (9)   | 0.0030 (8)  |
| C13 | 0.0508 (13) | 0.0314 (10) | 0.0414 (10) | 0.0050 (10)  | -0.0056 (10) | 0.0021 (9)  |
| C14 | 0.0442 (12) | 0.0345 (10) | 0.0372 (10) | -0.0001 (9)  | -0.0066 (10) | -0.0010 (8) |
| C15 | 0.0480 (14) | 0.0602 (14) | 0.0410 (11) | -0.0083 (13) | -0.0079 (11) | 0.0006 (10) |
| C16 | 0.0456 (13) | 0.0630 (14) | 0.0478 (12) | -0.0021 (12) | -0.0128 (11) | 0.0145 (11) |

### Geometric parameters ( $\text{\AA}$ , $^\circ$ )

|        |            |         |           |
|--------|------------|---------|-----------|
| O1—C2  | 1.359 (2)  | C4—H4   | 0.9300    |
| O1—H1  | 0.8200     | C5—C6   | 1.377 (3) |
| O2—C8  | 1.232 (2)  | C5—H5   | 0.9300    |
| O3—C3  | 1.371 (2)  | C6—H6   | 0.9300    |
| O3—C16 | 1.423 (2)  | C7—H7   | 0.9300    |
| O4—C11 | 1.377 (2)  | C8—C9   | 1.492 (3) |
| O4—C15 | 1.427 (3)  | C9—C14  | 1.394 (3) |
| O5—C12 | 1.378 (2)  | C9—C10  | 1.405 (3) |
| O5—C15 | 1.435 (3)  | C10—C11 | 1.369 (3) |
| O6—H6A | 0.857 (10) | C10—H10 | 0.9300    |
| O6—H6B | 0.848 (10) | C11—C12 | 1.381 (3) |

|            |             |               |             |
|------------|-------------|---------------|-------------|
| N1—C7      | 1.282 (3)   | C12—C13       | 1.363 (3)   |
| N1—N2      | 1.387 (2)   | C13—C14       | 1.395 (3)   |
| N2—C8      | 1.352 (3)   | C13—H13       | 0.9300      |
| N2—H2      | 0.899 (10)  | C14—H14       | 0.9300      |
| C1—C2      | 1.394 (3)   | C15—H15A      | 0.9700      |
| C1—C6      | 1.404 (3)   | C15—H15B      | 0.9700      |
| C1—C7      | 1.455 (3)   | C16—H16A      | 0.9600      |
| C2—C3      | 1.408 (3)   | C16—H16B      | 0.9600      |
| C3—C4      | 1.382 (3)   | C16—H16C      | 0.9600      |
| C4—C5      | 1.392 (3)   |               |             |
| C2—O1—H1   | 109.5       | N2—C8—C9      | 116.35 (16) |
| C3—O3—C16  | 117.72 (17) | C14—C9—C10    | 119.66 (18) |
| C11—O4—C15 | 105.99 (16) | C14—C9—C8     | 123.96 (18) |
| C12—O5—C15 | 105.81 (15) | C10—C9—C8     | 116.36 (17) |
| H6A—O6—H6B | 105.5 (19)  | C11—C10—C9    | 117.68 (18) |
| C7—N1—N2   | 114.10 (16) | C11—C10—H10   | 121.2       |
| C8—N2—N1   | 120.86 (16) | C9—C10—H10    | 121.2       |
| C8—N2—H2   | 122.6 (19)  | C10—C11—O4    | 128.26 (18) |
| N1—N2—H2   | 116.6 (19)  | C10—C11—C12   | 121.75 (19) |
| C2—C1—C6   | 119.08 (18) | O4—C11—C12    | 109.99 (18) |
| C2—C1—C7   | 123.01 (19) | C13—C12—O5    | 128.10 (17) |
| C6—C1—C7   | 117.90 (18) | C13—C12—C11   | 122.03 (18) |
| O1—C2—C1   | 123.91 (17) | O5—C12—C11    | 109.86 (17) |
| O1—C2—C3   | 116.37 (16) | C12—C13—C14   | 117.03 (17) |
| C1—C2—C3   | 119.72 (17) | C12—C13—H13   | 121.5       |
| O3—C3—C4   | 125.24 (18) | C14—C13—H13   | 121.5       |
| O3—C3—C2   | 114.56 (17) | C9—C14—C13    | 121.83 (18) |
| C4—C3—C2   | 120.20 (18) | C9—C14—H14    | 119.1       |
| C3—C4—C5   | 120.09 (19) | C13—C14—H14   | 119.1       |
| C3—C4—H4   | 120.0       | O4—C15—O5     | 108.32 (17) |
| C5—C4—H4   | 120.0       | O4—C15—H15A   | 110.0       |
| C6—C5—C4   | 120.1 (2)   | O5—C15—H15A   | 110.0       |
| C6—C5—H5   | 120.0       | O4—C15—H15B   | 110.0       |
| C4—C5—H5   | 120.0       | O5—C15—H15B   | 110.0       |
| C5—C6—C1   | 120.83 (19) | H15A—C15—H15B | 108.4       |
| C5—C6—H6   | 119.6       | O3—C16—H16A   | 109.5       |
| C1—C6—H6   | 119.6       | O3—C16—H16B   | 109.5       |
| N1—C7—C1   | 123.44 (18) | H16A—C16—H16B | 109.5       |
| N1—C7—H7   | 118.3       | O3—C16—H16C   | 109.5       |
| C1—C7—H7   | 118.3       | H16A—C16—H16C | 109.5       |
| O2—C8—N2   | 122.73 (19) | H16B—C16—H16C | 109.5       |
| O2—C8—C9   | 120.92 (19) |               |             |

Hydrogen-bond geometry (Å, °)

| <i>D</i> —H $\cdots$ <i>A</i>  | <i>D</i> —H | H $\cdots$ <i>A</i> | <i>D</i> $\cdots$ <i>A</i> | <i>D</i> —H $\cdots$ <i>A</i> |
|--------------------------------|-------------|---------------------|----------------------------|-------------------------------|
| O1—H1 $\cdots$ N1              | 0.82        | 2.04                | 2.743 (2)                  | 143                           |
| O1—H1 $\cdots$ O6              | 0.82        | 2.56                | 3.001 (2)                  | 115                           |
| N2—H2 $\cdots$ O6 <sup>i</sup> | 0.899 (10)  | 2.075 (11)          | 2.962 (2)                  | 168 (3)                       |

## supplementary materials

---

|                           |            |            |           |         |
|---------------------------|------------|------------|-----------|---------|
| O6—H6A···O2               | 0.857 (10) | 1.880 (12) | 2.728 (2) | 170 (3) |
| O6—H6B···O1 <sup>ii</sup> | 0.848 (10) | 2.269 (16) | 3.043 (2) | 152 (2) |
| O6—H6B···O3 <sup>ii</sup> | 0.848 (10) | 2.538 (19) | 3.226 (2) | 139 (2) |

Symmetry codes: (i)  $-x+1, y+1/2, -z+3/2$ ; (ii)  $x-1, y, z$ .



Fig. 1

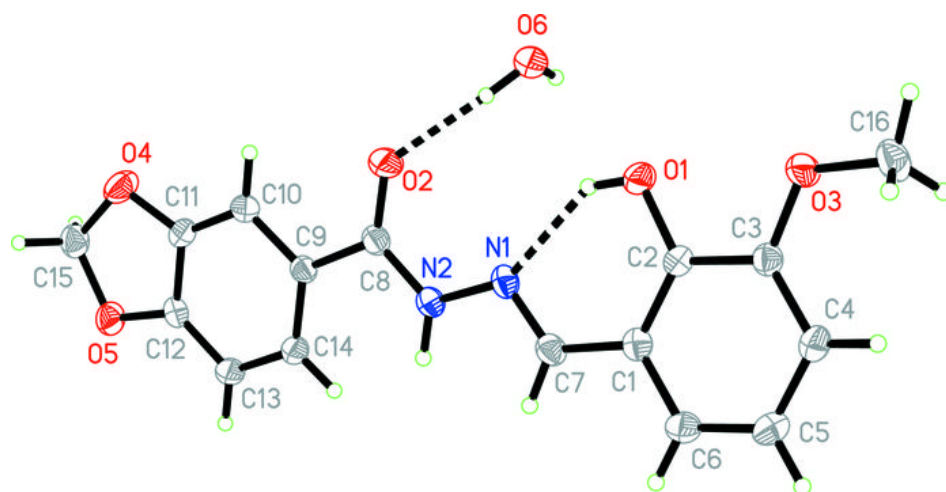


Fig. 2

